

KATIE O'SHEA

# Brush Wallpaper

Inspired by the elegant beauty of tumbleweed, Brush Wallpaper features an abstract botanical bohemian vibe. Think of the subtle beauty of the high desert. It has a natural look and varied texture, giving it a richness that is both dreamy and grounded. It is versatile in both dark and light colour ways.

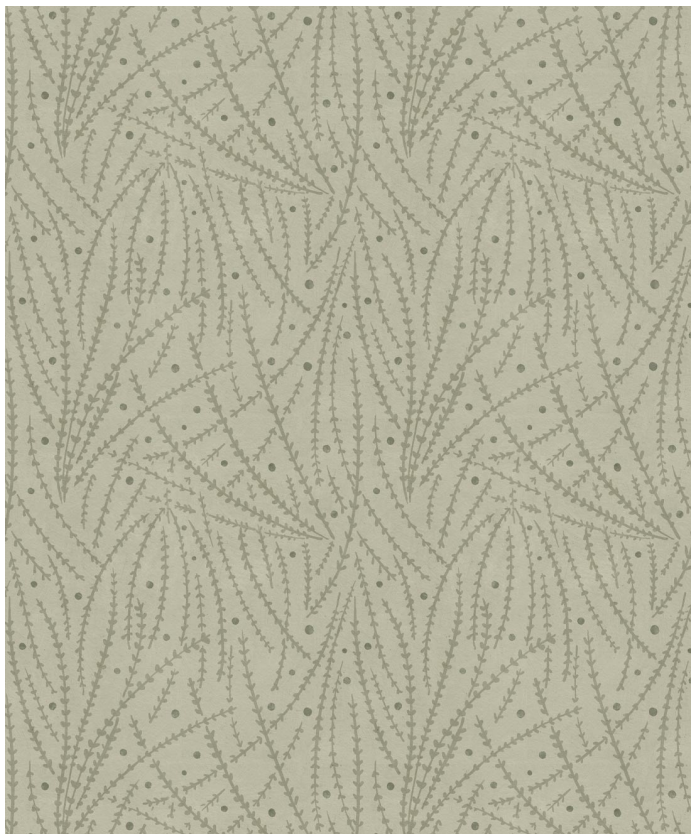


## SUSTAINABILITY

- Made to order within 10-15 days using the latest eco-friendly printing tech. That means no over-production and waste like regular wallpaper brands.
- Our PVC Free wallpaper base is sourced from sustainably managed forests.
- We print all wallpapers using odorless water-based ink. GREENGUARD GOLD Certified to standards for low chemical emissions into indoor air.
- Milton & King's wallpapers are of the highest quality, are environmentally friendly, and totally 100% vinyl-free.

## BATCHING & DELIVERY

- **Note:** Samples of this wallpaper are provided for review of the material, pattern scale and print technique – they are not intended to be used for colour matching purposes. There can be slight shifts in colour between runs, so your wallpaper may vary slightly from sample coloring.
- Please ensure that you order the correct amount as we do not guarantee that rolls printed in different batches will be an exact match.
- Industry leading production times on all orders.



ROLL DIMENSIONS	24" (61.5cm) x 33ft (10.05m)
MATERIAL/BASE	Low Sheen Non-Woven
PATTERN REPEAT	12" (30.75cm)
PATTERN MATCH	Straight Match
FINISH	Pre-trimmed Butt Join
CLEANABILITY	Washable
USAGE	Domestic & Commercial
PRODUCT CODE	KO111



## MILTON & KING®

GENERAL ENQUIRIES, ORDER & PRODUCTS

**+44 1895 746 596**

Mon–Fri: 9am–5pm (GMT)

[support@miltonandking.com](mailto:support@miltonandking.com)

[www.miltonandking.eu](http://www.miltonandking.eu)

# Non-woven Wallpaper

---

## CERTIFICATIONS

This wallpaper has obtained the following Fire and Flammability classifications.

### North America

"Class A" for ASTM Designation E84-15a. Comparable to UL 723, ANSI/NFPA No. 255 & UBC No. 8-1.

### Building Codes Cited:

National Fire Protection Association, ANSI/NFPA No. 101, "Life Safety Code". International Building Code, Chapter 8, Interior Finishes, Section 803.

### Australia & New Zealand

"Group 1" for AS/NZS Standards: AS/NZS 3837:1998

*The Building Code of Australia (BCA)*

Please [Contact Us](#) to request a copy of the fire certificates and test reports.

**MILTON & KING®**

GENERAL ENQUIRIES, ORDER & PRODUCTS

**+44 1895 746 596**

Mon-Fri: 9am-5pm (GMT)

[support@miltonandking.com](mailto:support@miltonandking.com)

[www.miltonandking.eu](http://www.miltonandking.eu)

## ADDITIONAL INFO

At Milton & King we have a huge range of designer wallpapers for you to choose from whether you're decorating your living room, bedroom, bathroom or commercial space we will have a wallpaper to suit your style.

### Non-woven wallpaper advantages

#### The most user-friendly wallpaper on the market.

- Sourced from FSC Certified Forests and printed with water-based ink. Non-wovens are earth friendly, and totally 100% vinyl-free.
- Breathable – Our designer wallpapers are breathable, helping them endure mould and mildew conditions. Thus, perfect to decorate bathrooms, kitchens and laundries.
- Paste-The-Wall – Made from both natural and non-porous synthetic fibres. These non-woven wallpapers will not absorb moisture from the adhesive. Simply apply the paste directly to the wall. The paper will not expand or contract with no booking time required.
- The wallpaper rolls are finished precisely to have no overlap. Meaning the panels simply butt up to each other for ease of installation.
- Cleanable – Dirt, dust and other marks can be simply cleaned using a damp cloth with soapy water.
- Durable – Milton & King's easy to install wallpapers are also hard wearing and tear-resistant. This is a great advantage as the wallpapers will not get torn during installation or removal.
- Easy to Remove – Once completely dry, non-woven wallpapers will come off easily. It should come down in full sheets with no need for the dreaded steamer or water. Without causing any damage to the walls upon their removal
- Roll Size – 24" wide x 33' long. Our rolls are the equivalent to a US double roll providing 65 square feet per roll.