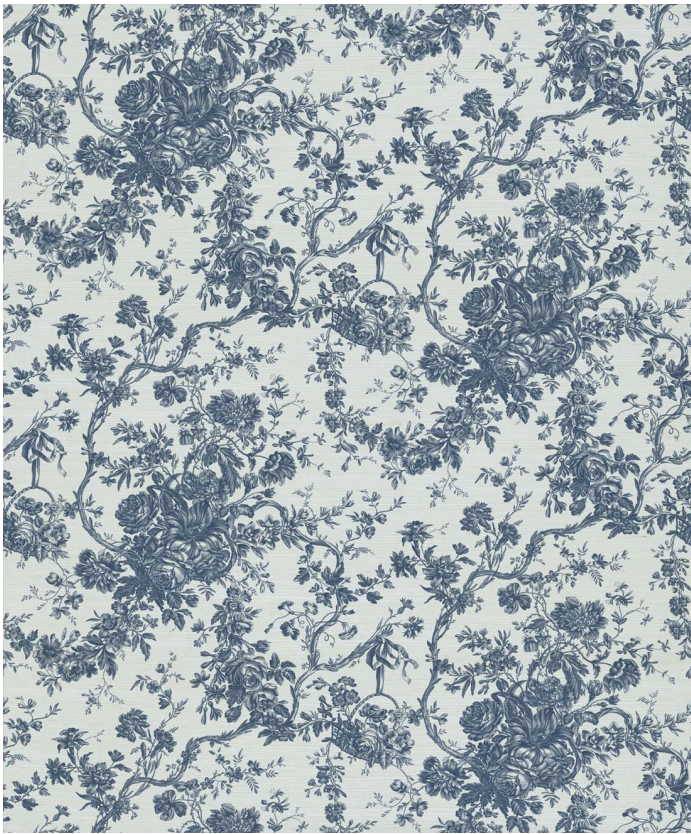
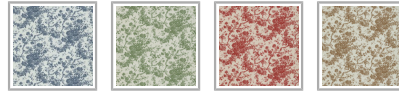


Kathryn Grasscloth Wallpaper

Kathryn is a botanical grasscloth that pairs natural texture with a refined pattern. Organic fibres bring depth and variation, enhancing the softness of the design.

The interplay between structure and material creates a surface that feels both tactile and composed, ideal for interiors that value warmth and craftsmanship.



ROLL DIMENSIONS	33.5" (85.5cm) x 33ft (10.05m)
PATTERN REPEAT	20.2" (51cm)
PATTERN MATCH	Straight Match
FINISH	Matte
CLEANABILITY	Spongeable
USAGE	Domestic & Commercial
APPLICATION	Paste The Paper
REMOVAL	Wet Removal



SUSTAINABILITY

- **Natural and Renewable Materials:** Our grasscloth wallcoverings are made from natural seagrass fibres. These fibres are renewable resources, as they come from plants that can be replanted and harvested sustainably.
Grasscloth wallcoverings are biodegradable, meaning they can naturally break down over time without causing harm to the environment. They can also be composted, reducing waste and landfill burden.
- **Low VOC and Non-Toxic:** Many grasscloth wallcoverings are manufactured using water-based adhesives and inks with low volatile organic compound (VOC) content. This reduces indoor air pollution and improves indoor air quality, making it healthier for occupants.
- **No PVC or Vinyl:** Grasscloth wallcoverings are generally free from PVC (polyvinyl chloride) and vinyl, which are materials commonly found in traditional wallcoverings. Avoiding PVC and vinyl reduces the use of harmful chemicals and synthetic materials.

BATCHING & DELIVERY

- **Note:** Samples of this wallcovering are provided for review of the material, pattern scale and print technique – they are not intended to be used for colour matching purposes. There can be slight shifts in colour between runs, so your wallcovering may vary slightly from sample colouring.
- Please ensure that you order the correct amount as we do not guarantee that rolls printed in different batches will be an exact match.
- Industry leading production times on all orders.

MILTON & KING®

GENERAL ENQUIRIES, ORDER & PRODUCTS

+44 1895 746 596

Mon-Fri: 9am-5pm (GMT)

support@miltonandking.com

www.miltonandking.eu

Grasscloth Wallpaper

MILTON & KING®

GENERAL ENQUIRIES, ORDER & PRODUCTS

[+44 1895 746 596](tel:+441895746596)

Mon–Fri: 9am–5pm (GMT)

support@miltonandking.com

www.miltonandking.eu

ADDITIONAL INFO

At Milton & King we have a luxury range of grasscloth wallcoverings for you to choose from whether you're decorating your hallway, living room, bedroom or dining room we have a wallpaper to suit your style and budget! With more than 750 wallpapers, we are bound to have the statement wallpaper you have been looking for. Grasscloth wallcoverings can be used in residential, commercial and hospitality interior design projects to add features with natural and specialty materials. Combined with superior customer support and quick delivery times.

Natural resource wallcovering important considerations

- Anti-microbial features – Grasscloth wallcoverings contain bactericides and mildew inhibitors to discourage the growth of mold and mildew under normal conditions.
- Paste-The-Paper – Made from natural fibres, these wallcoverings will expand when adhesive is applied. Simply apply the paste directly to the back of the paper—be generous, but avoid using excessive paste. Allow for booking time, as the wallcovering will expand slightly during this period before hanging.
- Book the wallcovering – “Booking” is a process where you fold the pasted sides of the wallcovering together, adhesive-to-adhesive, with the pasted side facing inwards. This allows the paste to activate and helps prevent it from drying out before you hang the wallcovering. Leave the booked wallcovering a few minutes.
- The wallcovering rolls are finished precisely to have no overlap. Meaning the panels simply butt up to each other for ease of installation.
- Spongeable – Dirt, dust, and other marks can be cleaned with a slightly damp sponge (do not use any solvents).
- Wet removal – is a common method for removing grasscloth & natural wallcovering. However, because grasscloth is made from natural materials, it can be delicate and requires a bit of extra care during the removal process to avoid damaging the walls.