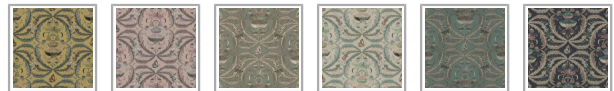




HOUSE OF HERAS

Magical Mariposa Decorative Textile Wallpaper

Graceful butterflies flit through a lush canopy of palm fronds and lily-of-the-valley in Magical Mariposa Decorative Textile Wallpaper. Translating to “magical butterfly,” this design captures the peaceful charm of a hidden garden. Its soft colour palette and flowing forms, paired with the understated depth of the decorative textile base, make it ideal for spaces in need of softness, stillness, and quiet wonder.



ROLL DIMENSIONS	24" (61.5cm) x 33ft (10.05m)
PATTERN REPEAT	22" (55cm)
PATTERN MATCH	Straight Match
FINISH	Matte
CLEANABILITY	Spongeable
USAGE	Domestic & Commercial
APPLICATION	Paste The Paper
REMOVAL	Wet Removal
WEIGHT	3.67 oz. per linear yd



MILTON & KING®

GENERAL ENQUIRIES, ORDER & PRODUCTS

+44 1895 746 596

Mon-Fri: 9am-5pm (GMT)

support@miltonandking.com

www.miltonandking.eu

SUSTAINABILITY

- **Cellulose-Based Construction:** This wallcovering is made with a cellulose fiber substrate (40–70%), a renewable and plant-derived material that supports more sustainable sourcing practices compared to purely synthetic alternatives.
- **Low VOC Composition:** The product includes acrylic latex and processing agents, and it meets flame resistance standards including ASTM E 84 Class A. While not specifically labeled as low-VOC, acrylic-saturated papers are typically compatible with low-emission adhesives and coatings, supporting better indoor air quality when installed with water-based systems.
- **No PVC Content:** This wallpaper does not list any use of polyvinyl chloride (PVC), a material commonly found in traditional vinyl wallcoverings. The absence of PVC helps reduce reliance on harmful synthetic materials and lowers environmental toxicity during manufacturing and disposal.
- **Lightweight and Durable:** At 166 g/m², this wallcovering offers a balance between durability and efficient use of raw materials. Its composition allows it to meet demanding flame, chemical, and lightfastness standards, extending product lifespan and reducing the need for frequent replacements.
- **Cleanability and Maintenance:** Designed to be washable with a soft sponge or vacuum, it minimizes the need for harsh cleaning chemicals that can harm indoor air quality and the environment.

BATCHING & DELIVERY

- **Note:** Samples of this wallcovering are provided for review of the material, pattern scale and print technique – they are not intended to be used for colour matching purposes. There can be slight shifts in colour between runs, so your wallcovering may vary slightly from sample colouring.
- Please ensure that you order the correct amount as we do not guarantee that rolls printed in different batches will be an exact match.
- Industry leading production times on all orders.

Decorative Textile

MILTON & KING®

GENERAL ENQUIRIES, ORDER & PRODUCTS

[+44 1895 746 596](tel:+441895746596)

Mon–Fri: 9am–5pm (GMT)

support@miltonandking.com

www.miltonandking.eu

ADDITIONAL INFO

At Milton & King we have a luxury range of grasscloth wallcoverings for you to choose from whether you're decorating your hallway, living room, bedroom or dining room we have a wallpaper to suit your style and budget! With more than 750 wallpapers, we are bound to have the statement wallpaper you have been looking for. Grasscloth wallcoverings can be used in residential, commercial and hospitality interior design projects to add features with natural and specialty materials. Combined with superior customer support and quick delivery times.

Natural resource wallcovering important considerations

- Anti-microbial features – Grasscloth wallcoverings contain bactericides and mildew inhibitors to discourage the growth of mold and mildew under normal conditions.
- Paste-The-Paper – Made from natural fibres, these wallcoverings will expand when adhesive is applied. Simply apply the paste directly to the back of the paper—be generous, but avoid using excessive paste. Allow for booking time, as the wallcovering will expand slightly during this period before hanging.
- Book the wallcovering – “Booking” is a process where you fold the pasted sides of the wallcovering together, adhesive-to-adhesive, with the pasted side facing inwards. This allows the paste to activate and helps prevent it from drying out before you hang the wallcovering. Leave the booked wallcovering a few minutes.
- The wallcovering rolls are finished precisely to have no overlap. Meaning the panels simply butt up to each other for ease of installation.
- Spongeable – Dirt, dust, and other marks can be cleaned with a slightly damp sponge (do not use any solvents).
- Wet removal – is a common method for removing grasscloth & natural wallcovering. However, because grasscloth is made from natural materials, it can be delicate and requires a bit of extra care during the removal process to avoid damaging the walls.